



YOUR SEARCH FOR  
**MBBS**  
ENDS HERE

**EXCLUSIVE PARTNER**

Be **BELARUS**

Best In **MBBS**



**JAY AMBE**  
**ABROAD PVT. LTD.**



**JAY AMBE  
ABROAD PVT. LTD.**

## Necessity of Doctors in today's world

It is believed that Medical field is the most favorite choice in India. To get admission in the medical field is also a proud moment. Number of seekers are more in India but admission is available for students with first class merit only.

According to Planning Commission of India there are less seats of medical and lack of doctors. The ratio of doctors is 1700 : 1 in India. 271 Medical colleges with 31172 seats are available in India. Due to this shocking numbers in 1998 'Medical Council of India' allowed students to study abroad. More than 30000 students get admission in Medical field in various countries.

Students planning to study abroad prefers '**JAY AMBE ABROAD**'

## From the desk of Chairman

Mr. Pravinbhai Gajera, The Chairman of Jay Ambe Abroad says '*Education is lifelong and infinite learning of mankind*'. Since 2008 he is in the field of science education and thousands of students have completed their studies in medical field. My mission is to provide medical education through '**JAY AMBE ABROAD**' to the students below merit.



**Pravinbhai Gajera**  
Chairman of Jay Ambe Abroad





**JAY AMBE**  
**ABROAD** PVT. LTD.  
Education Beyond Borders

**WE ARE EXCLUSIVE PARTNER FOR MBBS EDUCATION**



**BELARUS**



**BELARUS**



# BELARUS





## WHY STUDY MBBS in **BELARUS**



### **No TOEFL and IELTS required.**

Belarus, nation of eastern Europe. Until it became independent in 1991, Belarus, once in the past known as Belorussia or White Russia, was the littlest of the three Slavic republics incorporated into the Soviet Union (the bigger two being Russia and Ukraine).

While Belarusians share an distinct ethnic character and language, they never previously enjoyed in solidarity and political sway, aside from amid a concise period in 1918. Belarusian history is in this manner less an isolable national story than an investigation of provincial powers, their exchange, and their consequences for the Belarusian individuals. The region that is presently Belarus experienced partition and changed hands more than once; accordingly, a great part of the historical backdrop of Belarus is inseparable from that of its neighbours.

Its capital is Minsk, the biggest economic, scientific, cultural centre of the city and the populated city in Belarus. The population of Minsk is 1982500 in (2018 beginning) Over 40% of the area (207,600 square kilometre) is covered with forest. Its major economic sectors are industry service and manufacturing. Its divided in six regions: Brest, Homiel, Hrodna, Mahilou, Minsk and Vitebsk. The total population of Belarus is 9 478 200 (till July 2018). Agents of in excess of 100 nationalities live in Belarus. Most of the populace is spoken to by the indigenous Belarusians, who constitute more than 3/4 of the whole populace. The landscape of Belarus is transcendently low, bumpy and level. The Farming area possesses 42.29% of the region, woods represent 42.55%. There are in excess of 208 thousand waterways and streams with add up to the length of 91 thousand kilometers and around 10,000 lakes in Belarus.

- **Medical in Belarus recognized Internally.**
- **Affordable MBBS course fees in Belarus**
- **No Donation is required for admission in Belarus.**
- **Modern and Hi-Tech technology available for students.**
- **0% Crime rate in Country.**
- **100% English Medium Course.**



## WEATHER

Average **January** temperatures range from the mid-20s F (about  $-4\text{ }^{\circ}\text{C}$ ) & Maximum temperatures in **July** are generally in the mid-60s F (about  $18\text{ }^{\circ}\text{C}$ ).  
**Rainfall is moderate.**



## POPULATION

of Belarus is **94,78,200**  
(till July 2018).

S  
U  
R  
V  
I  
V  
E



## PARENTS/STUDENTS GUIDANCE



## GRADUATION CEREMONY

OTHER COMPARISONS	INDIA 	ABROAD 
 Total Duration	5.5 Years	5.5 Years / 6 Years
 Total College Fees	Ranges Between 50 to 80 Lakhs	Ranges Between 15 to 20 Lakhs
 Food & Accommodation	10k to 13k per month (Boarding and Lodging)	10k to 13k per month (Boarding and Lodging)
 Hospital For Internship/Clerkship	Available	Available
 Mode Of Teaching	English	English
 Exit Test (NEXT as per NMC bill)	Yes	Yes
 MCI, WHO, FAIMER Listed	Yes	Yes
 International Exposure	No	Yes
 Future Dual Programs Opportunity MD+MPH, MD+MBA, MD+MMSc	No	Yes
 After Course Residency Options	Only India	India, USA, UK, Australia, New Zealand, Canada, Germany
 Total Cost (College Fees, Visa, Food & Accommodation)	Approx. 1 Cr.	Apporx. 22 to 30 Lakhs



# COMMON FACILITIES AT A GLANCE

**Kitchen Area**



**Accommodation**



**Laundry**



**Medical Facility**



**Library**



**24x7 Mentor**



**Super Market**



**Restaurant**



**Side Scenes**





# CAMPUS LIFE





# FOOD JOURNEY ABROAD



**JAY AMBE**  
**ABROAD PVT. LTD.**

Education Beyond Borders







# Light Moments



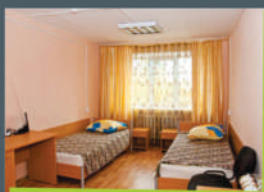


# FLOW CHART OF THE SUCCESS JOURNEY

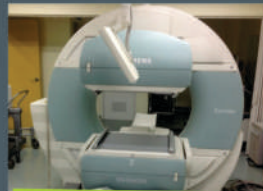
FROM INDIA TO ABROAD WITH COMPLETE CARE



ALL STEPS TAKEN FOR THEIR CONVENIENT STAY



THEORY AND PRACTICAL KNOWLEDGE



ONE ON ONE PROBLEM SOLVING BEFORE EXAM TO LEAD THE SUCCESS



MBBS

# Students went abroad to do MBBS



Belarusian State Medical University, Belarus.

Grodno State Medical University, Belarus.

Gomel State Medical University, Belarus.



**JAY AMBE  
ABROAD** PVT. LTD.

**JAY AMBE ABROAD PVT. LTD.**

421, Deepkamal-1, Near Zoo Park, Sarthana Jakatnaka,  
Varachha, Surat-395006 (Guj.), India. Mob.: +91 77580 51898

E-mail : [jayambeabroad@gmail.com](mailto:jayambeabroad@gmail.com) | [www.jayambeabroad.com](http://www.jayambeabroad.com)